

**Monday, May 6, 2019**

- You need a pencil and your sketchbook; ALL else to the front of room.
- Complete warm-up.

Today, we will:

- 1, 4: Weaving
- 2: Mask Décor
- 5: Op Art Project
- 6: Mask Décor

Answer in 2-3 COMPLETE sentences.

**What is the focal point of this painting? How did the artist emphasize it?**



**SB8 and 9: Due 5/8 or 9**

**Moving object**

- Draw something that's appears to be moving (cars, animals, people, etc.)
- Be creative!
- Fill the page
- Shade/Color



**Free Sketch**

- Your Choice
- Fill the page
- Shade/Color
- School Appropriate



**Tuesday, May 7, 2019**

- You need a pencil and your sketchbook; ALL else to the front of room.
- Complete warm-up.

Answer in 2-3 COMPLETE sentences.

**What do you think this painting is about? Why do you think so?**



Today, we will:

- 1, 4: Weaving
- 2:
- 5: Op Art Décor
- 6: Mask Decor

**SB8 and 9: Due 5/8 or 9**

**Moving object**

- Draw something that appears to be moving (cars, animals, people, etc.)
- Be creative!
- Fill the page
- Shade/Color



**Free Sketch**

- Your Choice
- Fill the page
- Shade/Color
- School Appropriate



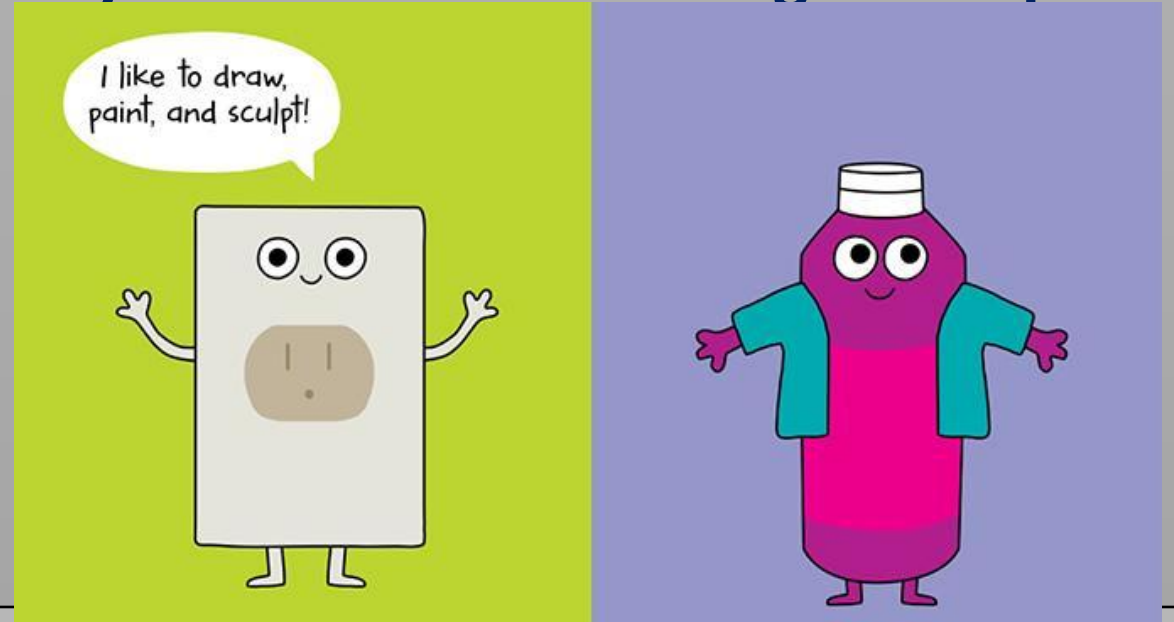
**Wednesday, May 8, 2019**

- Turn in sketchbook to bin on front table.
- Clear table. All “stuff” to front.

**Today, we will:**

- 1: Work on COIL POTS**
- 5: Optical Illusion project**

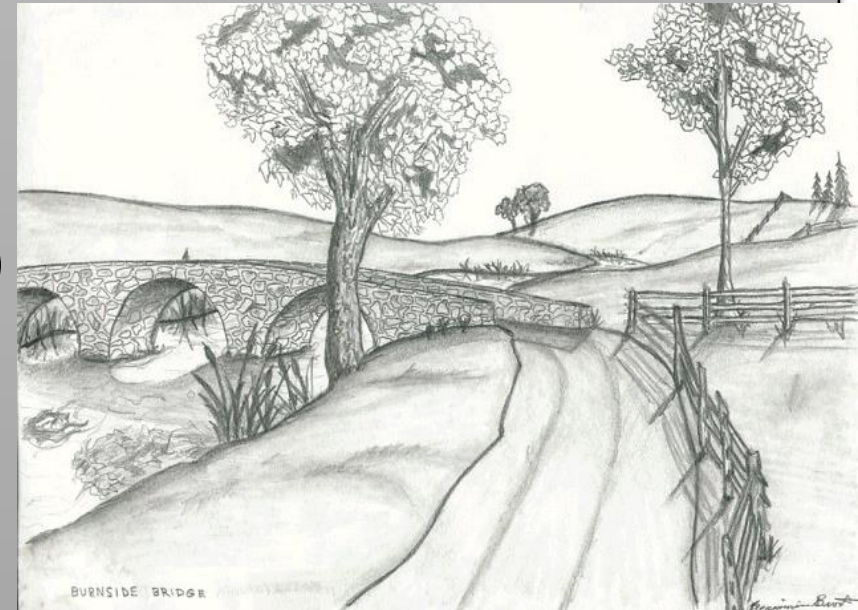
**Can you solve the following visual puns?**



**SB10: Due 5/15**

**Bridge drawing**

- Draw a bridge over a small body of water (ex. A bathtub, pool, puddle)
- Add details, shading or color
- Fill the page



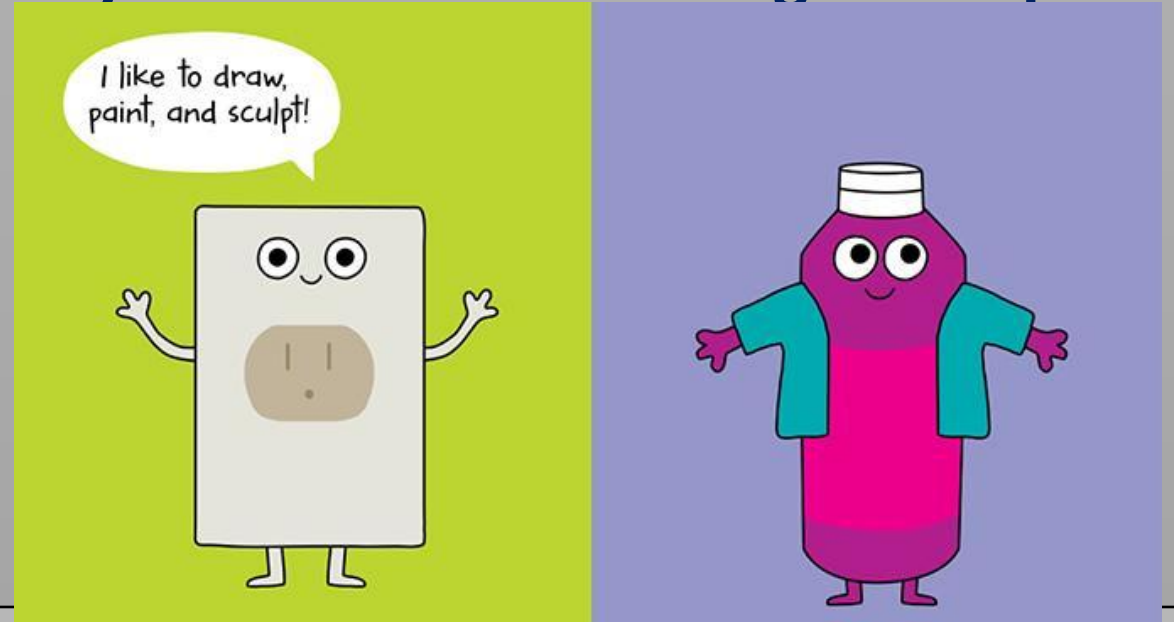
Thursday, May 9, 2019

- Turn in sketchbook to bin on front table.
- Clear table. All “stuff” to front.

Today, we will:

- 2: Work on COIL pots
- 4: Weaving—finish today
- 6: Mask Decor

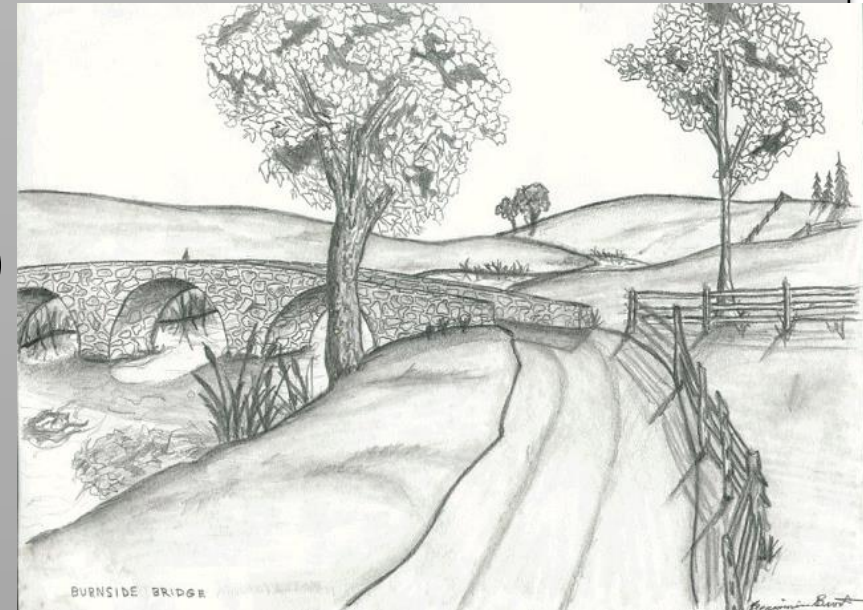
Can you solve the following visual puns?



**SB10: Due 5/16**

**Bridge drawing**

- Draw a bridge over a small body of water (ex. A bathtub, pool, puddle)
- Add details, shading or color
- Fill the page



**Friday, May 10, 2019**

- Collect sketchbook.
- You need a pencil and your sketchbook.
- Complete warm-up.

Warm up: Answer in 2-3 COMPLETE sentences.

This sculpture has the principle of **CONTRAST**. What is contrast? Which **ELEMENTS** did the artist contrast?



Today, we will:

- 1, 2: Complete Coil pots, other projects
- 4: Introduce Op Art
- 5: Introduce Weaving
- 6: Work on Mask Decor

**SB10: Due 5/15 or 16**

**Bridge drawing**

- Draw a bridge over a small body of water (ex. A bathtub, pool, puddle)
- Add details, shading or color
- Fill the page

